

# BX

## LEDMOV700

The BX is an IP rated moving head beam fixture powered by a laser light engine with a housing made of lightweight magnesium enabling pan and tilt speeds that rival fixtures much smaller in size. The 24-bit dimming system ensures smooth control across the entire range. The 100W laser source outputs a 0.7° beam angle and the colour system incorporates both CMY flags and 19 dichroic filters. The BX has an effects engine of 6 rotating textured glass gobos and 19 static gobos for beam shaping. Layerable 8 and 24 facet circular prisms and a rotating textured frost adds versatility to every look. Each of these features can be layered and still produce an impressive output, making the BX a superb beam effects light.



# BX Specifications

## Optical System

Lamp Source	100W Laser
Beam Angle	0.7° to 5°

## Colour

CMY Flags	
1x Colour Wheel (19 filters)	

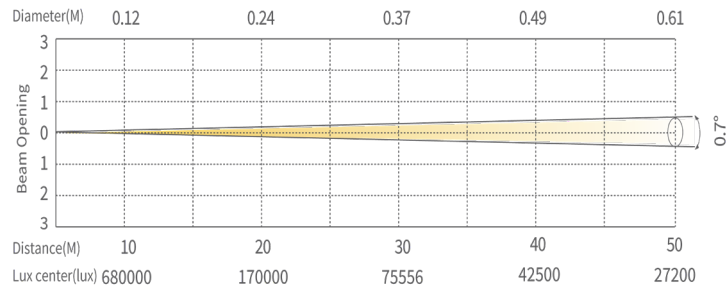
## Gobos

Fixed	19 excluding open
Rotating	6 excluding open (glass)

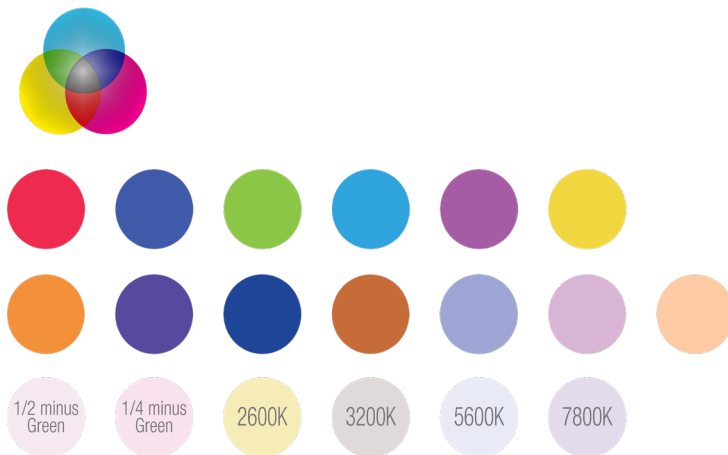
## Electrical Specifications

Voltage	100 – 240VAC 50/60Hz
Max Power	270W
Power Connection	True1 In/Out
Signal Connection	5pin DMX In/Out, 2x RJ45 Ethercon

## Photometrics



## Colours



## Included Accessories

2x Omega Brackets
<b>PSHCAB110</b> 2m TrueCon Piggy Back

## Effects

Prism	8f & 24f Circular
Frost	Heavy

## Work Environment

Ambient Temperature	-20°C to 45°C
IP Rating	IP65

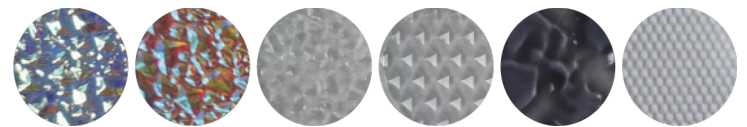
## Control System

Dimmer	0 to 100% 24-bit
Pan/Tilt	540°/270° 8-16 bit
Cooling	Forced Convection
Control	DMX512, RDM, ArtNet, sACN, WDMX
Display	On-board control, Custom
Personality	Basic(19), Standard(23), Extended(27)

## Appearance

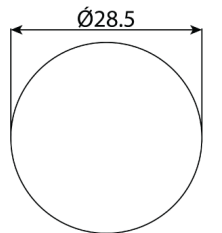
Size (LWH)	381 x 280 x 665mm
Weight	26.7kg
Casing	Magnalium Die Cast
Colour	Black

## Rotating Gobos

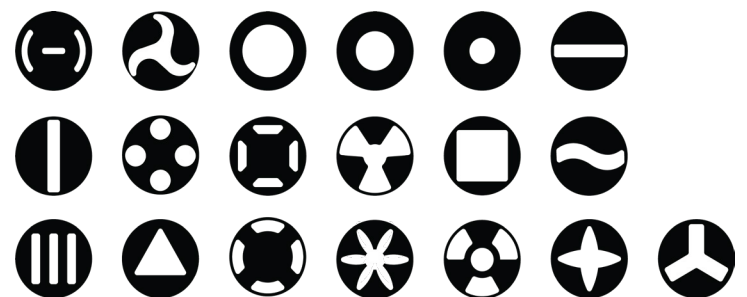


Rotating gobo size is 28.5mm

These can be interchanged with other glass gobos only



## Fixed Gobo



## Optional Accessories

**LEDMOV701** BX Flight Case 1 Way

**SYDNEY**  
+61 2 9748 1122

**MELBOURNE**  
+61 3 9681 7511

**PERTH**  
+61 8 9248 8119

**BRISBANE**  
+61 7 3267 3177

**AUCKLAND**  
+64 9 869 3293